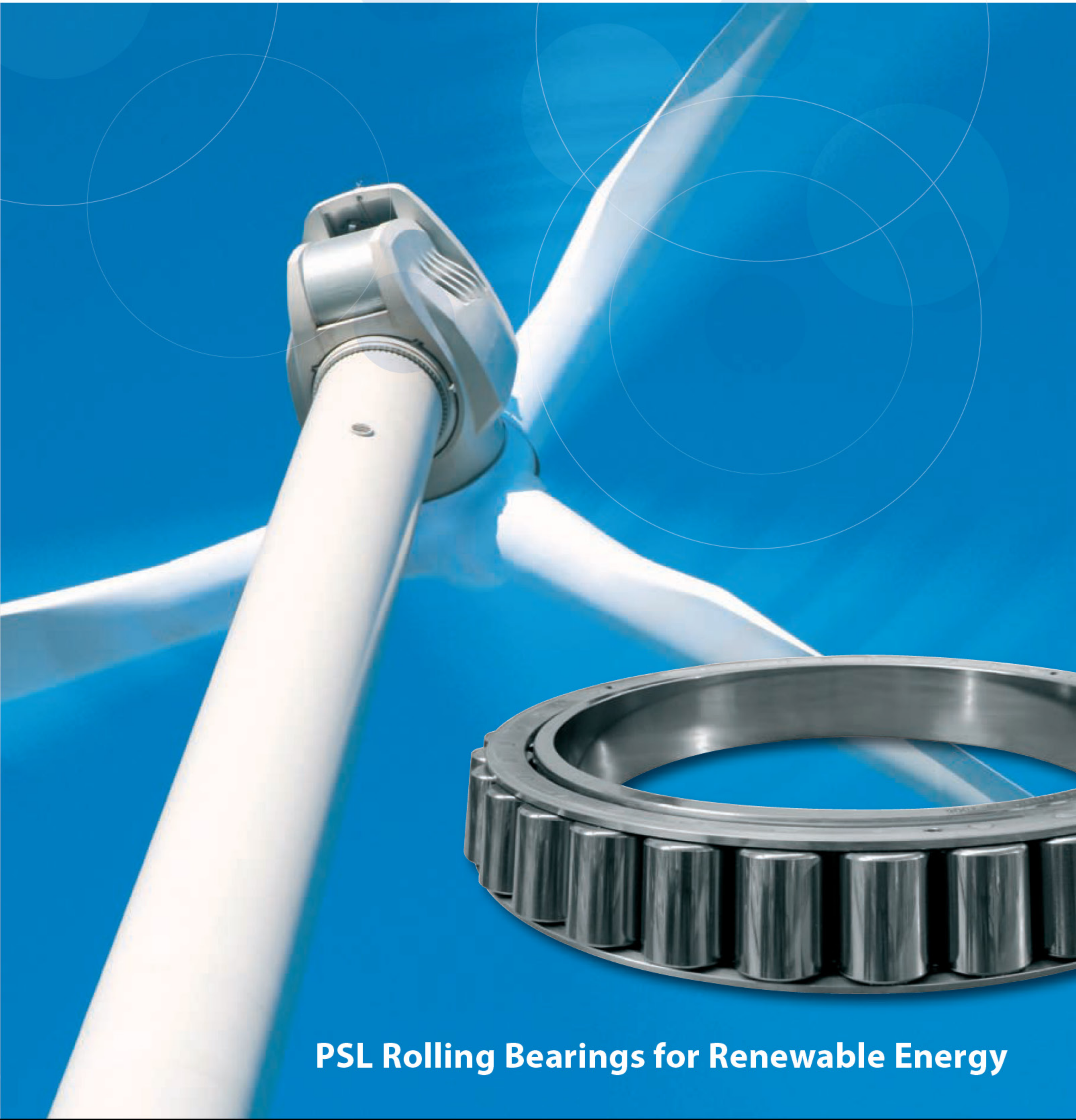




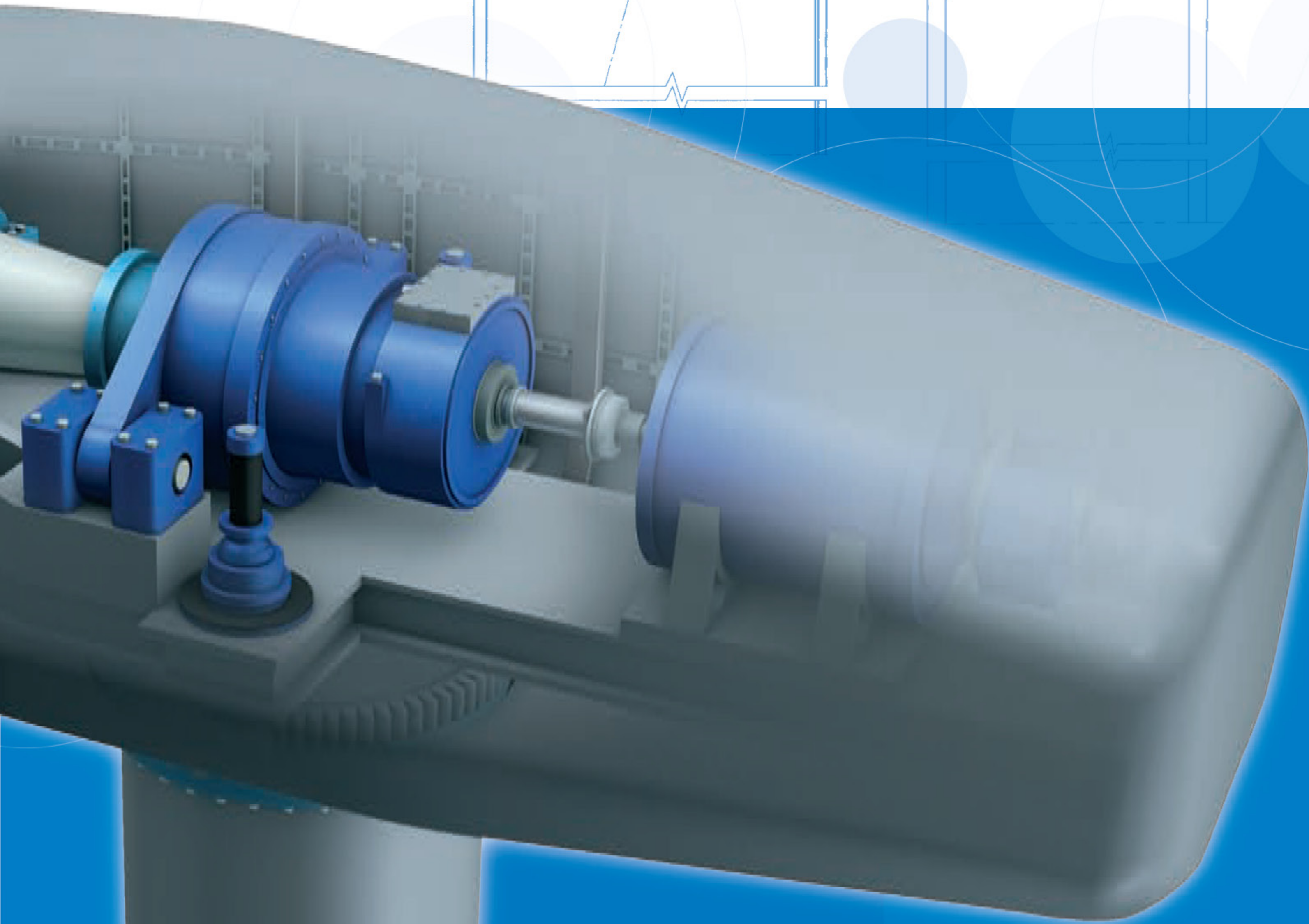
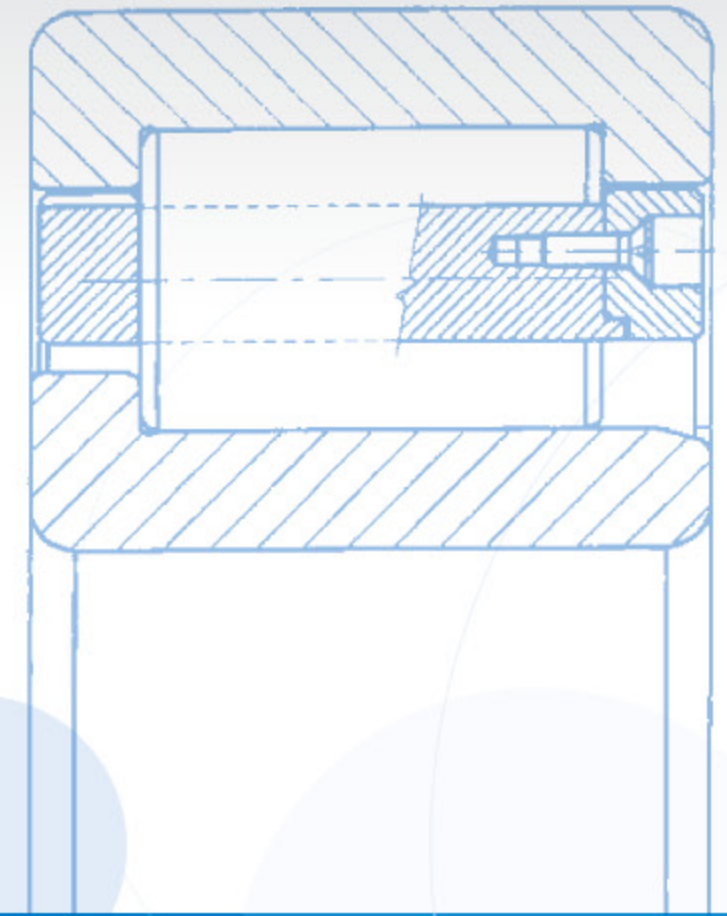
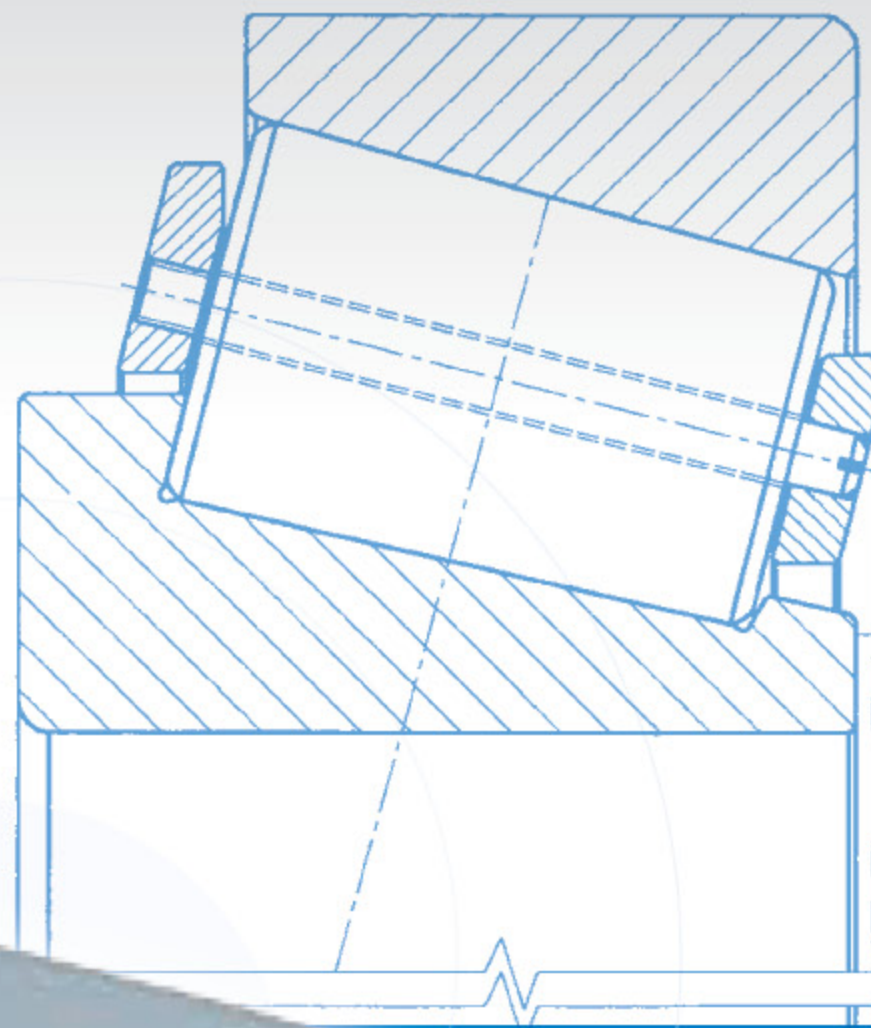
Quality For Heavy Duty



PSL Rolling Bearings for Renewable Energy

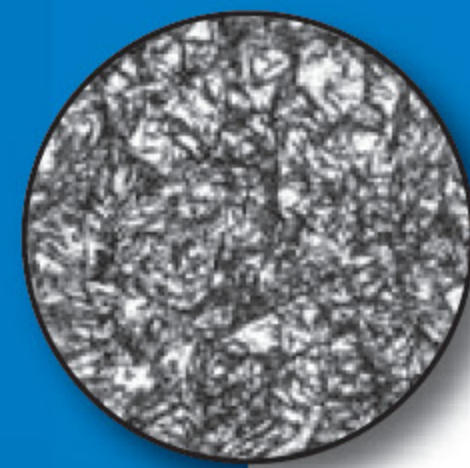
Main Shaft

The main shaft is generally arranged on a pair of rolling bearings. For this assembly we offer different types of special large-diameter rolling bearings made from a case-carburising material – tapered, cylindrical or spherical roller bearings.



Material

Quality, proper chemical composition and purity of the input material all have major effects on the final properties of bearings. Another significant focus of control is the proper heat treatment process (carburising, hardening), assuring prescribed parameters of the final material structure. These parameters are monitored and evaluated in a special metallurgical laboratory.

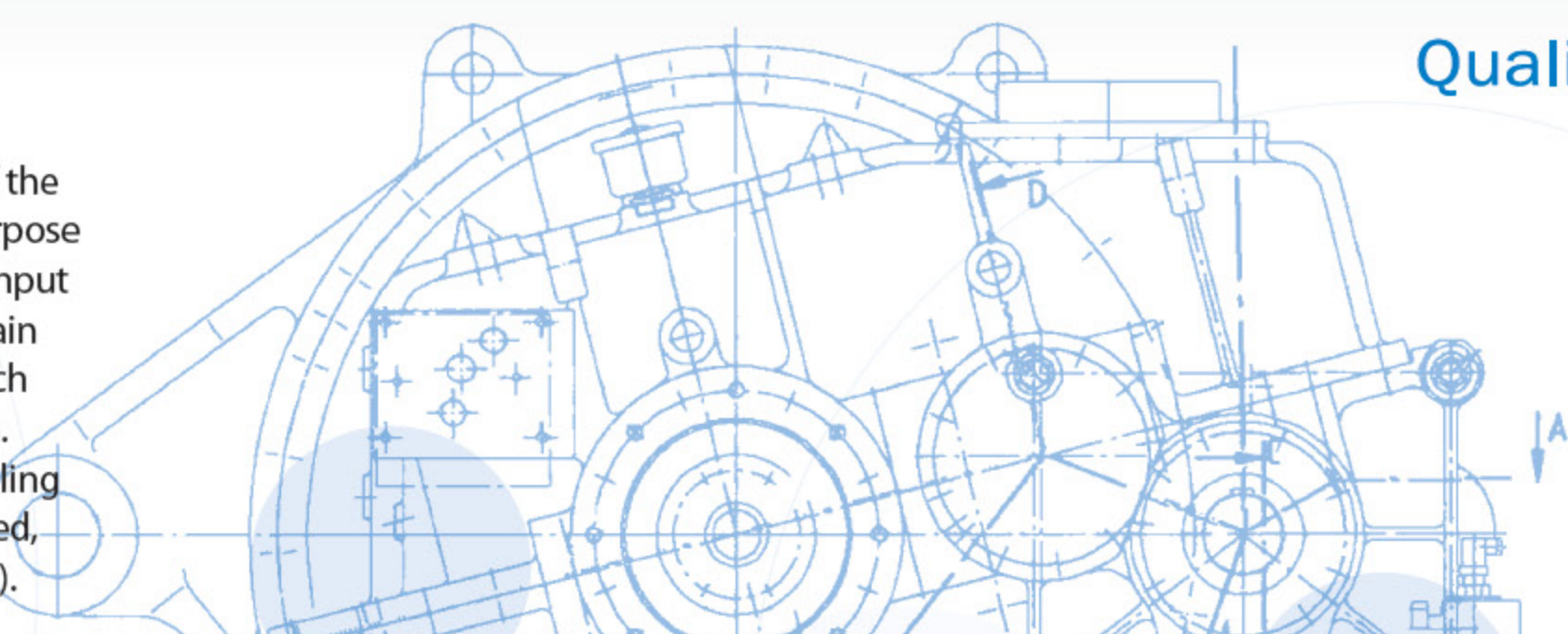




Quality For Heavy Duty

Gearbox

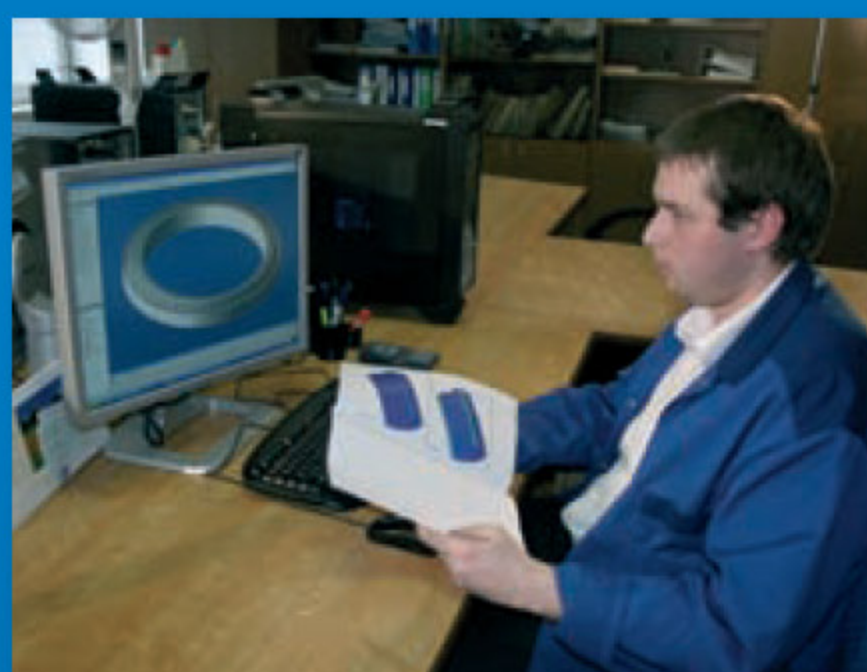
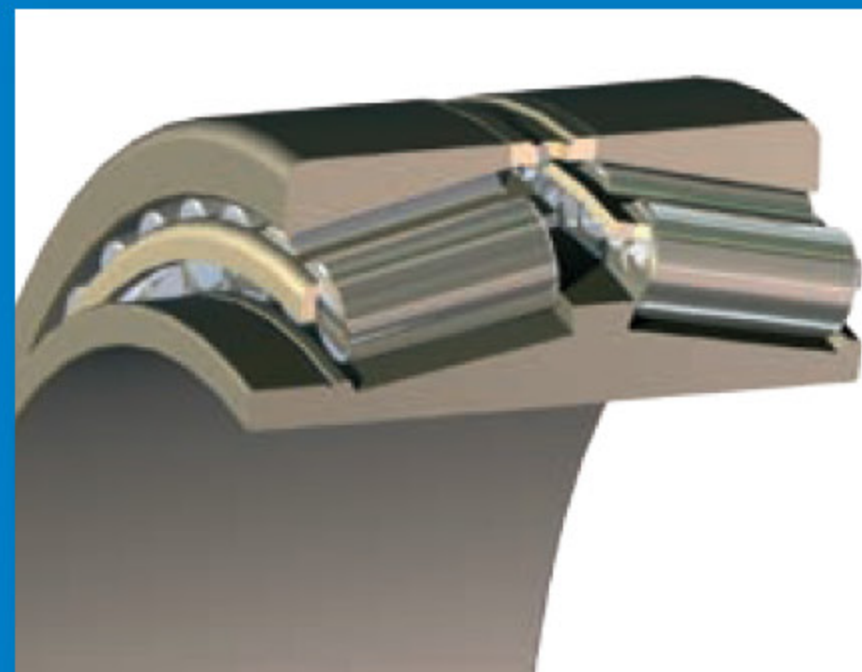
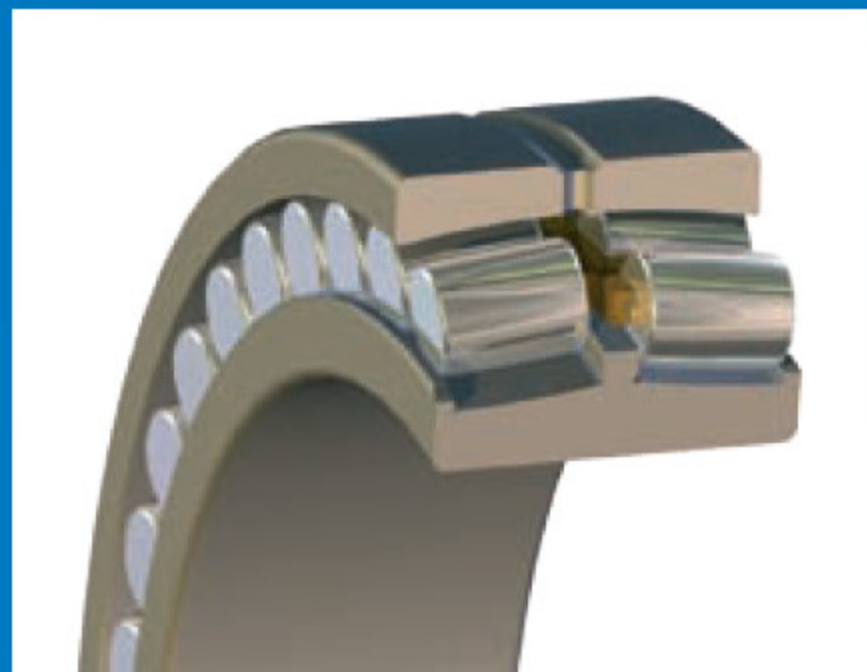
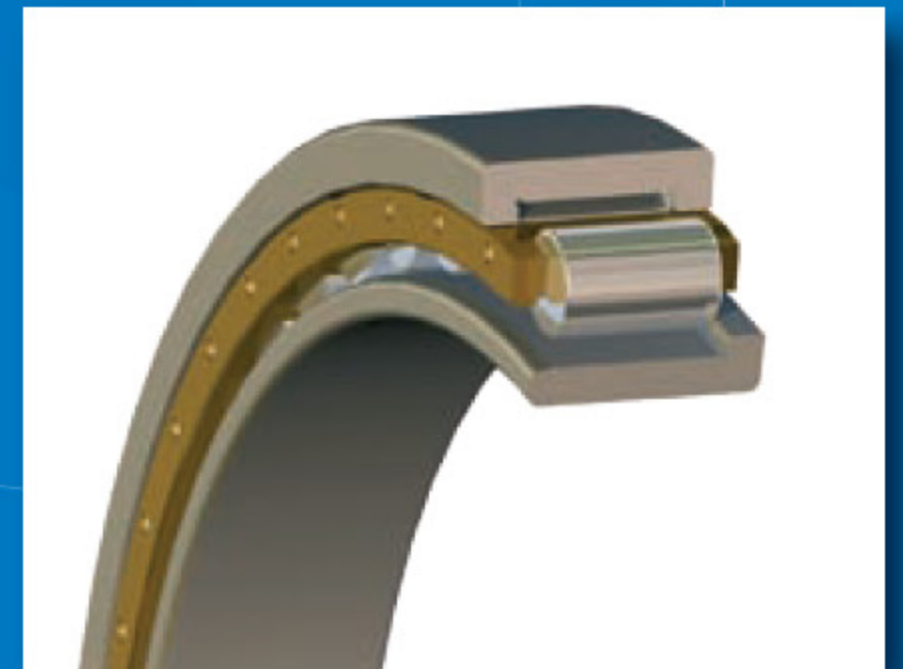
The gearbox forms the central part of the wind mills drive system. The main purpose is acceleration of slow speed of the input shaft in several stages in order to obtain higher speed of the output shaft which drives the generator rotor via a clutch. We manufacture different types of rolling bearings for the main gearbox (tapered, cylindrical or spherical roller bearings).



www.pslas.com



All bearing assembly solutions proposed by us are closely analysed and designed with regard to required operating parameters of a windmill, as well as those custom requirements outlined by our customers. PSL, a.s. offers world class quality bearings.



Production programme

◆ The present production assortment comprises standard but primarily special large diameter rolling bearings, developed and designed according to the customers' requirements with regard to their applications and to operation parameters.

◆ More than 90% of all production is currently exported outside of Slovakia to almost each part of the world, especially to Germany, France, Italy, USA, Canada, Sweden, Finland, Czech Republic, Russia, etc.

◆ PSL, a.s. currently has the capability to produce rotary products up to the outside diameter of 3 500 mm.

Production assortment includes:

- ◆ single row and double row tapered roller bearings
- ◆ four-row tapered roller bearings
- ◆ cylindrical roller bearings
- ◆ double row spherical roller bearings
- ◆ crossed taper roller bearings
- ◆ thrust bearings
- ◆ worm drive systems
- ◆ cylindrical rollers



Quality For Heavy Duty

www.pslas.com

PSL Certifications



◆ PSL quality management system is certified according to the ISO 9001:2000 and VDA 6.1 in the entire process from the development and design through the production up to the sale, service and consulting. Conformity with the environmental standards ISO 14 001 began in 2003. The company obtained the GOST R certifications in 2005.

◆ The production of rolling bearings is realized in a technological chain which guarantees a high quality level. It includes processes like turning, drilling, gear cutting, hobbing, heat treatment – carburising, hardening, grinding and assembly.

◆ A high attention is focussed not only on a continual modernization of the technological machines and the inspection and measurement equipment, but also on the CAD/CAM, in order to improve the quality and productivity.



Quality For Heavy Duty



Production

PSL, a.s.
Robotnícka ul.
017 01 Považská Bystrica
Slovakia

Phone: +421 42 4371 111
Fax: +421 42 4326 644
e-mail: pslpb@pslas.com

www.pslas.com



Sales U.S.A.

PSL of America Inc.
2003 Case Parkway South
Twinsburg
Ohio 44087
USA

Phone: +1 330 405 1888
Fax: +1 330 405 1398
e-mail: sales@pslamerica.com



Sales Russia

OOO "PSL"
ul. Krasnogo Mayaka, 26
117 570 Moscow
Russian Federation

Phone: +7 495 105 6187
Fax: +7 495 105 6188
e-mail: pslopورا@yandex.ru



Sales West Europe

PSL Wälzlager GmbH
Waldstraße 23/B3
63128 Dietzenbach
Germany

Phone: +49 6074 8289 830
Fax: +49 6074 8289 8331
e-mail: info@psl-gmbh.de